



Little Red Walk, Dartford
£2,400 PCM



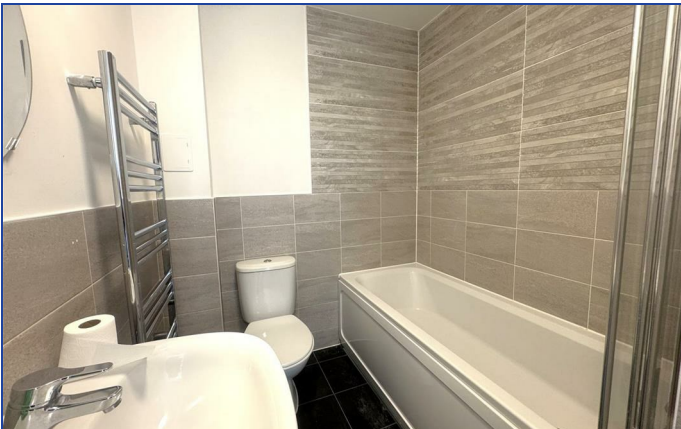
AVAILABLE NOW Parris Residential are delighted to offer this fabulous five-bedroom, three-storey family home with an en-suite shower room, family bathroom, and ground floor W.C. The property offers spacious accommodation with fitted wardrobes in two bedrooms. The kitchen is fitted and comes with built-in oven & Hob, washing machine, dishwasher and fridge freezer. Just to the side of the house is an allocated parking space. To the rear is a neat & tidy garden with a decked area. Your inspection is highly recommended.

EPC - C | Council Tax: Dartford - Band E | Security Deposit: £2769 | Holding Deposit: £553.00





Energy Efficiency Rating			Environmental Impact (CO ₂) Rating		
	Current	Potential		Current	Potential
Very energy efficient - lower running costs			Very environmentally friendly - lower CO ₂ emissions		
(92 plus) A			(92 plus) A		
(81-91) B			(81-91) B		
(69-80) C			(69-80) C		
(55-68) D			(55-68) D		
(39-54) E			(39-54) E		
(21-38) F			(21-38) F		
(1-20) G			(1-20) G		
Not energy efficient - higher running costs			Not environmentally friendly - higher CO ₂ emissions		
England & Wales			England & Wales		
EU Directive 2002/91/EC			EU Directive 2002/91/EC		



These particulars are believed to be correct but their accuracy is not guaranteed and they do not constitute an offer or form part of any contract. Great care is taken when measuring but measurements should not always be relied upon for ordering carpets, equipment etc. Parris Residential have not tested any included equipment or central heating system checked mentioned in these particulars and purchasers are advised to satisfy themselves as to their working order and condition. Where floor plans are shown they are for illustration and guidance purposes only.



entrance hall 9'7 x 8'0 (2.92m x 2.44m)

lounge & Dining room 18'1 max x 15'8 (5.51m max x 4.78m)

kitchen 11'9 x 8'3 (3.58m x 2.51m)

ground floor W.C.

first floor landing 12'2 x 6'5 (3.71m x 1.96m)

master bedroom 13'7 plus wardrobe depth x 11'4 (4.14m plus wardrobe depth x 3.45m)

en-suite shower room & W.C. 6'4 x 5'5 (1.93m x 1.65m)

bedroom two 15'9 x 9'7 max (4.80m x 2.92m max)

second floor landing

bedroom three 13'6 plus wardrobe depth x 9'2 (4.11m plus wardrobe depth x 2.79m)

bedroom four 11'7 x 7'6 (3.53m x 2.29m)

bedroom five 8'2 x 8'0 (2.49m x 2.44m)

bathroom 9'1 x 5'8 (2.77m x 1.73m)

rear garden

allocated parking space

